



---

SPW-Series Stretch Pallet Wrapper  
Model: SPW-982HP, SPW-982LP

**Distributed By:**

Version 1.0  
Last Updated: 10/10/19

**IMPORTANT - PLEASE READ THIS CAREFULLY**

The development of a good safety program, that is rigidly enforced, is absolutely imperative when involved in the operation of industrial equipment. Our machinery is well designed and includes extremely important safety features. The part you the user play through proper installation and maintenance procedures is of far greater significance than our designs. Only properly trained individuals following rigidly enforced safety rules, as recommended by A.N.S.I. and O.S.H.A., should be allowed to operate these machines.

---

---

## TABLE OF CONTENTS

---

### **Preface**

Warranty Notice	5
Warranty	6-7
Warranty Exceptions	8
Warnings	9-10
General Safety Regulations	11

### **Pallet Wrapper Section**

Description	12
Specifications	13
Technical Data	14
Unpacking	15-16
Installation and basic set up	17-22
Installation of Optional Loading Ramp	22
Installation of film roll	23
Plugging Machine In	24
Front control panel	25
Turning on machine	26
Touch pad control panel nomenclature	27
LED Display	28
Sequence of operation	29
Setting machine parameter	30-34
Tension Control	35
Machine Pause	36
Getting started	37-38

### **Troubleshooting**

Machine does not start	39-44
Machine in Emergency Stop Mode	39-40
Turntable will not turn	41
Film Carriage will not rise	42
	43-44

**SPW-982 Pallet Wrapper Manual**

---

<b>Maintenance</b>	45-49
General Maintenance Requirements	45
Checking turntable chain tension	46
Lubrication of Chain	47
Replacing the turntable support rollers	48
Replacing the film carriage lift belt	49
Adjustment of photo eye	50
<b>Electrical Schematic</b>	63
Exploded view drawings with parts listings	50-61
Spare Parts List	62

## **IMPORTANT WARRANTY NOTICES**

### **OPERATING AND MAINTENANCE MANUAL**

The operating and maintenance manual has been carefully prepared to provide the user with all the information needed to properly install, operate, and maintain your Sealer Sales equipment.

Please read this manual carefully and refer to it for information on the care and use of your Sealer Sales equipment. It is recommended that additional copies be ordered for use by production, maintenance, and supervisory personnel. Although the design of this equipment incorporates safeguards to protect personnel, care should be used in operating, adjusting, and servicing.

Attention is directed to the warranty which accompanies all your Sealer Sales equipment. The terms and conditions of this warranty apply only to unmodified units. Any unauthorized modifications to the equipment automatically voids this warranty.

---

---

## Sealer Sales

# WARRANTY

Sealer Sales, Inc. warrants each new product manufactured to be free from defects in material and workmanship for a period of 3 years from date of shipment by Sealer Sales.

Not covered by this warranty is normal wear of components such as, but not limited to; belts, chains, fuses, bulbs, rollers etc. or misuse or abuse of the machine or any components thereof. As well, parts returned without the prescribed paperwork will not be covered by this warranty. Labor to remove or repair any component is also not covered by this warranty. Damage in transport is the responsibility of the carrier and is not covered under our warranty. This warranty is not transferable with any subsequent resale.

Defective parts under warranty must be returned to Sealer Sales freight prepaid. Sealer Sales's sole obligation and purchaser's sole remedy in the event of a warranty dispute shall be, at Sealer Sales's option , to repair or replace the part in question. Labor incurred in removing or installing the defective part is not covered by this warranty. Prior to returning any parts for any reason, contact Sealer Sales for a Return Authorization Number. This number must accompany all returns.

This warranty shall not apply if equipment has been tampered with, misused, improperly installed, altered, or has received damage due to abuse, carelessness, accident or failure to follow recommended regular maintenance procedures or has been serviced by someone other than a duly authorized factory representative without the express written consent of Sealer Sales, Inc.

---

---

**SPW-982 Pallet Wrapper Manual**

---

This warranty is in lieu of all other warranties, expressed or implied, including but not limited to warranties of merchantability and fitness for a particular purpose, non-infringement or any other matter.

Sealer Sales shall have no liability to any person for direct, indirect, incidental or consequential damages or delay resulting from any defect negligence, or tort and customer hereby waives for itself any and all claims for punitive damages and all claims of negligence of strict liability or both. In no event shall our liability exceed the purchase price of the product which was actually paid.

Sealer Sales reserves the right to make changes, additions, or improvements to our products with no obligation to make such changes in any previously shipped product covered by this warranty.

Sealer Sales shall not be held liable for any damages arising out of or in connection with the operation of the equipment should customer or its agent fail to maintain equipment in safe operating condition. This warranty shall become unenforceable if and to the extent the customer or its agents remove, disconnect, or otherwise render useless any safety device and or parts designed or affixed by us or fails to maintain and service equipment in a manner as advised.

**Sealer Sales provides a 3 year warranty on parts, excluding shipping or freight costs for replacement parts. All warranty parts are shipped F.O.B. Rancho Cucamonga, California.**

**WARRANTY EXCEPTIONS**

The following parts are an exception to the general warranty list on page 9. Each part listed below shall carry a 30-day warranty unless designated otherwise.

SPW-982

1. Fuses
- 
-



## WARNINGS

Every effort has been taken to ensure your safety while operating this machine; however, there still remain certain risks. Do not allow this machine to be operated before informing all personnel of the following warnings.

### **WARNING.....**

Do not tamper with the electrical wiring. Only use a licensed electrician for maintenance. Always disconnect the electrical power before attempting any maintenance to all electrical and/or moving parts.

### **WARNING.....**

In order to prevent injury to personnel and/or machinery DO NOT INCREASE SETTINGS OR RATINGS ON EITHER ELECTRICAL OR MECHANICAL OVERLOAD SAFETY DEVICES.

### **WARNING.....**

KEEP HANDS AWAY FROM MOVING CONVEYORS AND ASSEMBLIES. Conveyor belts that have become worn or frayed are capable of being hazardous. They should be replaced promptly.

### **WARNING.....**

NEVER OPERATE THIS OR ANY MOVING EQUIPMENT WITHOUT ALL COVERS AND GUARDS IN PLACE. The internal mechanism of most packaging machinery contains numerous shear, pinch, and inrunning nip points, many of which are capable of causing severe injury and/or permanent disfigurement.

---

---

**SPW-982 Pallet Wrapper Manual**

---

---

**WARNING.....**

To minimize the potential for personnel injury, always be sure that machine operators and others working on the machinery are properly trained in the correct usage of the equipment and properly instructed regarding the safety procedures for operation.

**WARNING.....**

ANY MODIFICATIONS TO EITHER THE ELECTRICAL CIRCUITRY OR THE MECHANICAL ASSEMBLIES OF THE MACHINERY WILL VOID ANY WARRANTIES ASSOCIATED WITH THIS EQUIPMENT. Such modifications may introduce hazards that would not otherwise be associated with this machinery. Sealer Sales will not be responsible for any consequences resulting from such unauthorized modifications.

**WARNING.....**

It is important that the machine operator turn off the Main Power Switch when he/she has finished operating the unit.

---

---

## **General Safety Regulations**

Before using the machine or carrying out maintenance operations read the following instructions very carefully:

### **Before**

1. Read the instructions about how to set up the machine
2. Check all the safety guards on the machine and immediately replace any worn or broken parts with original spares.
3. Make sure that no tools or other objects have been left lying on the machine and that the machine itself is perfectly clean.
4. Read the maintenance and spare parts very carefully.
5. Read all the labels and plates applied to the machine.

### **During**

1. Do not wear clothing that could get tangled up in the moving parts of the machine.
2. Do not put the hands or any kind of object inside the field of operation of the machine
3. Do not load the machine with boxes heavier than those recommended by the manufacturer.

### **After**

1. Always stop the electric motor by pressing the red button on the switch
  2. Switch off the electric power.
- 
-

**SPW-982 Pallet Wrapper Manual**

---

---

**Description**

The model SPW-982 is a versatile, reliable and economical pallet stretch wrapping machine designed to accommodate a large variety of pallet sizes. Using modern technology the model SPW-982 will apply stretch film to a pallet load. This inexpensive system offers a high degree of protection for any pallet load.

**Operation**

The operation of the model SPW-982 pallet wrapper comprises 4 easy steps

1. Operator places pallet load on revolving turntable by means of forklift or pallet jack (if optional ramp is used)
  2. Operator attaches stretch film to turntable base
  3. Press "start" cycle for automatic operation
  4. Cut film from pallet load at completion of work cycle.
- 
-

**SPW-982 Pallet Wrapper Manual**

---

**Specifications****Roll Dimensions**

The machine is capable of using different types of stretch film with the following dimensions:

- A: Internal diameter of roll 3" (76.2mm)
- B: External diameter of roll 12" (300mm)
- C: Height of roll: 20"
- D: Thickness of film: STD 80gauge  
\*Other film thickness may be used
- E: Weight of roll: 40lbs max

In order to obtain the best results while using your machine we recommend using a good quality stretch film.

**Pallet Dimensions**

The model SPW-982 can generally wrap pallets with the overall dimensions listed below

- Maximum Length: 48" (1,200mm)
- Maximum Width: 48" (1,200mm)
- Maximum Height: 85" (2,150mm)

**Pallet Weight**

Maximum recommended pallet weight load is 4,000lbs (1,800kg)

---

**SPW-982 Pallet Wrapper Manual**

**Technical Data**

<b>Machine Weight</b>	1,450lbs (660kg)
<b>Shipping Weight-Approximate</b>	1,625lbs (738kg)
<b>Crated Dimensions</b>	124" L x 69" W x 35" H (3,150mm) x (1,750mm) x (890mm)
<b>Power Requirements</b>	110volt/15amp
<b>Recommended Operating Temperatures</b>	Min 40 f / Max 104 f +5 / +40 c
<b>Turntable Rotation Speed</b>	12RPM

## UNPACKING

### THOROUGHLY INSPECT EQUIPMENT UPON ARRIVAL.

If goods are received short or in a damaged condition, it is important that you notify the carrier's driver **before he leaves your company** and **insist** on a notation of the loss or damage across the face of the freight bill. Unless this is done, no claim can be enforced against the transportation company.

**If concealed loss or damage is discovered, notify the carrier at once and insist on an inspection. This is absolutely necessary! A concealed damage report must be made no later than ten (10) days from the date the shipment was delivered. Unless you do this, the carrier will not consider any claim for loss or damage.** The carrier's agent will then make an inspection and grant a concealed damage notation. If you give the transportation company a clear receipt for the goods that have been damaged or lost in transit, you do so at your own risk and expense.

All claims must be filed within 10 Days of delivery date or carrier will not accept them.

Sealer Sales is willing to assist in every possible manner to collect claims for loss or damage; however, this does not hold Sealer Sales responsible for collection on claims or replacement of material.

---

---

**SPW-982 Pallet Wrapper Manual**

---

**Unpacking**

\* Picture shown with optional ramp



Your model SPW-982 is enclosed in a wooden crate for protection. If your machine does not arrive in good condition, write on shipping paperwork that concealed damage may have occurred. You must write on bill of lading that concealed damage may have occurred. **If you do not – The Freight companies will not pay any damage claims filed due to clear signed bill of lading.**

Remove stretch film protective wrap and remove pallet wrapper from crate.

\* Pallet Wrapper is fork lift portable and has fork channel at base of frame. You may use these channels to remove the Pallet Wrapper with fork lift.

---



**Installation & Set Up**



Cut nylon straps holding mast down.



Cut nylon straps that hold pre-stretch unit in place.

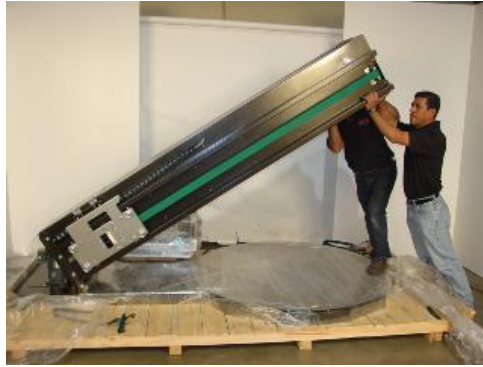


Remove protective plastic stretch film from tower.

**\*Tower is very heavy- Do not attempt to lift alone. Using two to three people lift tower upward.**

SPW-982 Pallet Wrapper Manual

---



Push tower upward into up right position.



**\*Very Important**

Take special care you do not pinch cables underneath tower when installing

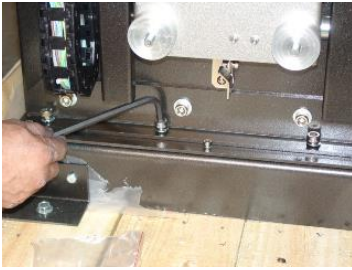


Remove bag with bolts and lock key for control panel.

---

**SPW-982 Pallet Wrapper Manual**

---

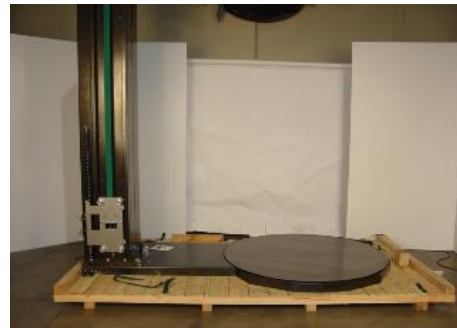


Use the 6 bolts provided to mount tower to base using 3 bolts on each side.

**Installing Film Rack**



Remove plastic covering from Base and turntable.



Your machine should look like this.



Remove plastic from pre-stretch Assembly



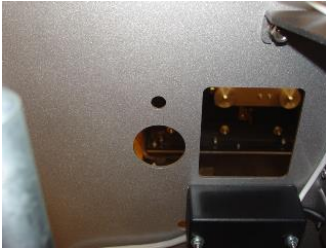
Remove 4 nuts and washers from pre-stretch mounting plate.

---

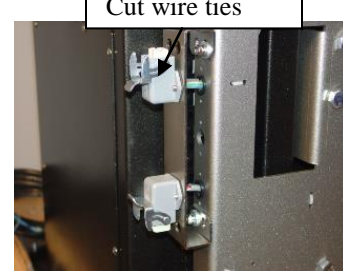
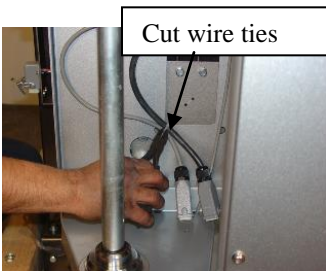
SPW-982 Pallet Wrapper Manual



\* Note-The film carriage unit is extremely heavy. Use two people to lift into position.



Using the small hole line up with threaded stud on mounting plate.



1. Cut wire tie connecting cables
2. Use quick disconnects to attach cables
3. Lock into position



**SPW-982 Pallet Wrapper Manual**

---

**Remove Pallet Wrapper from Base**



1. Remove the 2 bolts from Holding plate near tower base  
On both sides of machine



2. Remove 2 bolts from holding plate at opposite end of machine near turntable



Using forklift from rear of machine place forks in upper half of channel frame.



Raise forks to lift frame from base

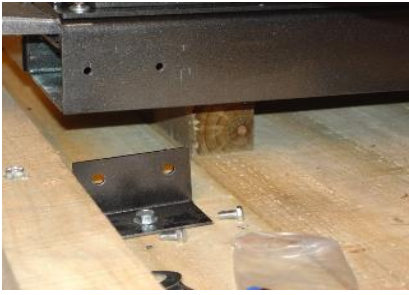


Insert 2X4 underneath frame to raise up

---

**SPW-982 Pallet Wrapper Manual**

---



Remove forks from top channel.



Insert forks into lower channel (one with larger opening) push forks into channel as far as possible. Lift machine off pallet and place on floor in desired position.

**Installation of optional loading ramp**

Use forklift to bring ramp next to turntable base. Lift ramp using slot handles on each side. Metal pin ramp fits into hole on base frame of pallet wrapper—simply drop into position—ramp can be mounted from all three sides.

---

**Installation of film roll**



Remove roll lock bearing and place roll of 20" stretch film over shaft

**The SPW-982 uses a simple single roller mechanical brake stretch device to help elongate and stretch the film.**

**SPW-982 Pallet Wrapper Manual**

---

**Plug Machine In**

Machine comes complete with power cord and 110volt plug.

**\*Make sure to use a dedicated line-** Do not run any other equipment on same power line.

Before plugging in machine make sure main power switch is in off position.

Plug into regular 110 volt power outlet.

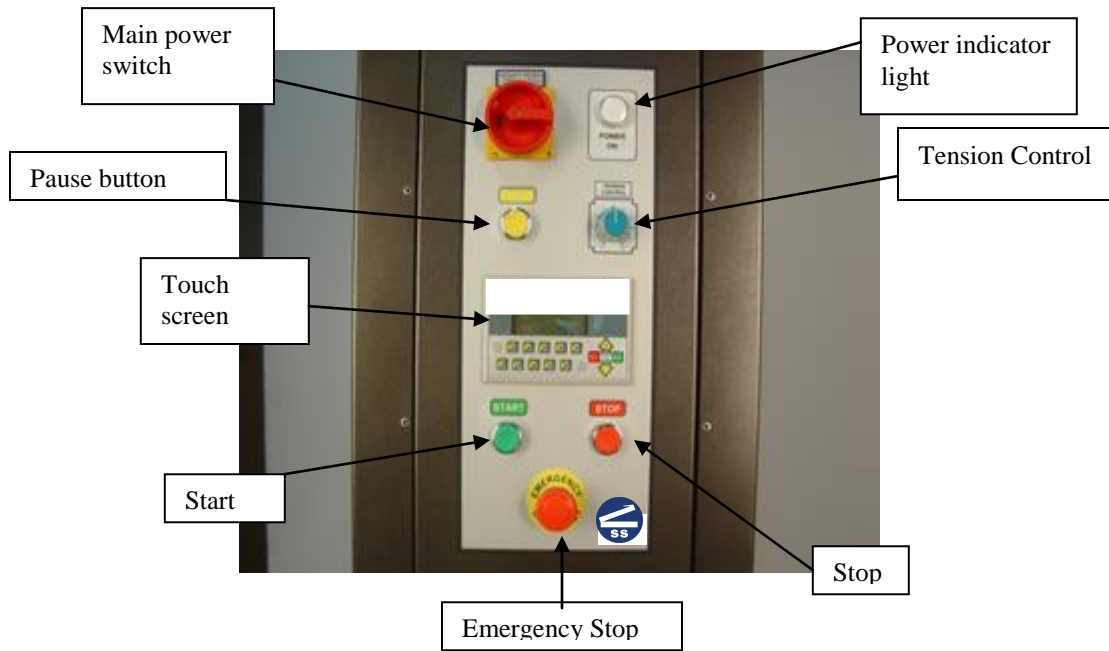
Make sure the voltage supplied to the machine is 110 volt.

---



**SPW-982 Pallet Wrapper Manual**

---



**Front Control Panel**

---

## SPW-982 Pallet Wrapper Manual

---

### Turning on Machine



**Off** position



**On** position

Turn power switch to **ON** position

---

**SPW-982 Pallet Wrapper Manual**

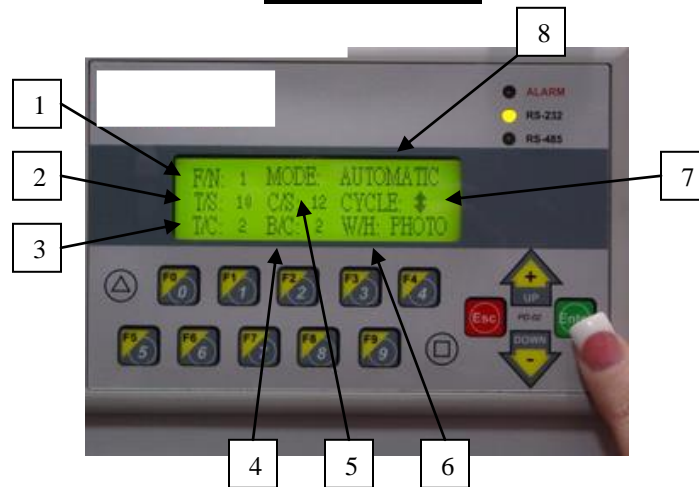
**Touch Pad Control Panel**



1. **Alarm indicator** – Turns red for approximately 5 seconds when you first power up machine.
2. **RS-232** – Will flash rapidly and continuously when machine is on.
3. **RS-485** - Not active.
4. **+ or ↑ up arrow key** – Allows operator to increase parameter.
5. **Enter** – Once parameter is set operator must press enter for parameter to be saved into memory.
6. **- or ↓ down arrow key** – Allows operator to decrease parameter.
7. **Esc** – Escape and return to previous screen.
8. This icon is not active.
9. **F1-F9 Keys** – The 9 pre-set memory programs were different functions and programs can be stored.
10. **F0 Key** – This key is to change from automatic to manual mode only.
11. This icon is not active.

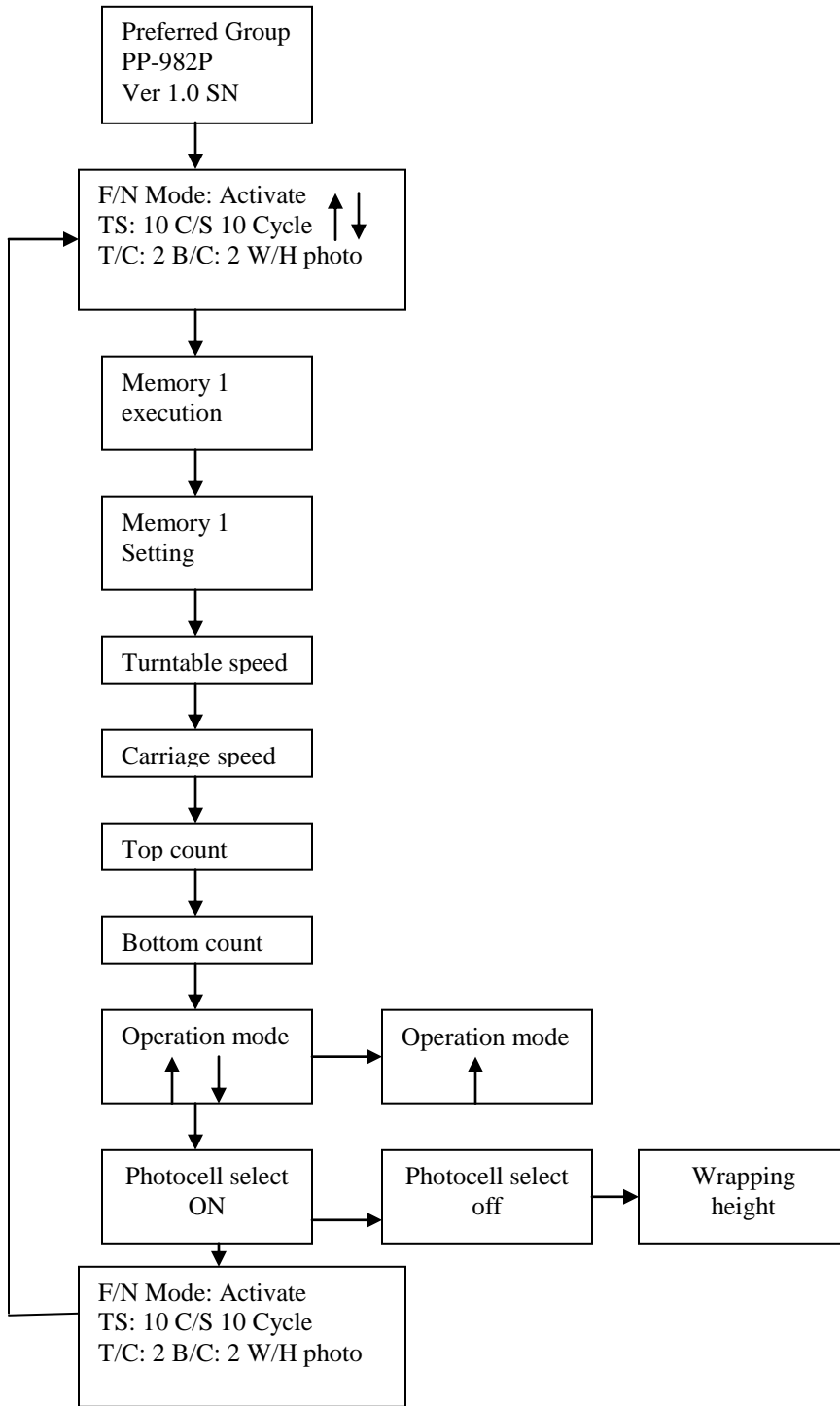
**SPW-982 Pallet Wrapper Manual**

**LED Display**



1. F/N 1: Function memory location 1
2. T/S: Turntable speed
3. T/C: Top wrap count
4. B/C: Bottom wrap count
5. C/S: Carriage speed
6. W/H: Wrap height/Photo eye
7. Cycle ↑↓ : Up and down cycle mode
8. Mode: Automatic/manual

Sequence of Operation



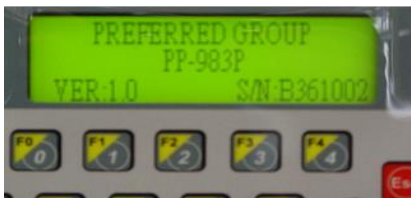
---

---

## Setting Machine Parameters



Turn main power switch to “on” position



Machine model and serial # will be displayed



Machine will automatically go to program #1 when first turned on.



Press program F1 memory 1 will appear on the screen and “Execution” will be displayed.



Press the + or up arrow key and "Setting" will appear



Press enter and turntable speed will appear and the first adjustment value is turntable speed



Press the ↑ you can now use the ↑ or ↓ arrow key to increase or decrease the factory setting which is 10. (min 4 – max12)



Press ↓ arrow key to reduce number to 10



SPW-982 Pallet Wrapper Manual



Press Enter to save this function to memory 1 and the next value will appear which is carriage speed.



**Carriage speed** – This is the speed at which the film carriage moves up and down the mast. Increase or decrease as desired, then press Enter to save factory setting 10. (Min 4 – Max 12)



**Top count** – This is the number of revolutions the turntable will spin once the film carriage reaches the load height. Increase or decrease as desired then press Enter to save into memory. Factory setting is 2 (Min 1 – Max 10)



**Bottom count** – This is the number of revolutions the turntable will spin once the film carriage reaches the bottom position. Increase or decrease as desired then press Enter to save into memory. Factory setting is 2.





**SPW-982 Pallet Wrapper Manual**



**Operation mode** – This allows the operator to set the operation mode from up and down to only up direction to wrap. This feature would be used by someone who wanted either very fast cycle times or does not need reinforced stretch wrap on pallet load.



**Operation mode** – By pressing  up arrow key operation can set machine to start wrap cycle at top of pallet load. Factory setting  is up and down cycle mode.



**Photocell select** – Photocell on when photo cell on is used – photo eye will automatically seek height of pallet load.



**Photocell Select – Photo cell off** allows operator to choose to use photo eye or not to use photo eye. Operation would use wrap height setting (show on fig ) and machine will wrap to set height. Good for use when reflective type products or black pallet loads interfere with photo eye operation.

**SPW-982 Pallet Wrapper Manual**

---

**Wrapping height** - If photo cell select is “off” the machine will only wrap to the height you have programmed into it.  
 Min height – 0” Max height – 90”

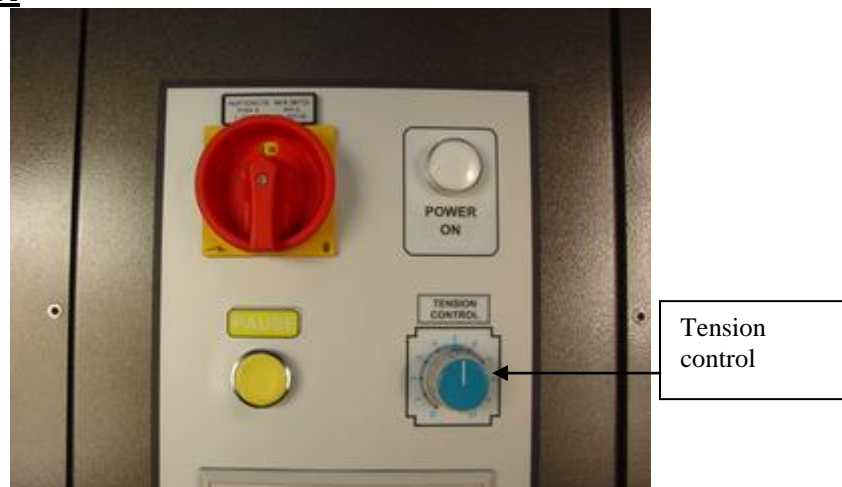


Once programming is complete display screen will display current settings for specific program number used.



\* You may repeat this process by pressing the F2-F9 program memory keys and input different values into each program setting.

---

**SPW-982 Pallet Wrapper Manual****Tension Control**

Your model SPW-982 comes with a mechanical brake stretch system that will typically give you up to 150% stretch.

The tension control knob does not change the % of stretch. This knob controls the amount of **"force to load"** that is applied to the pallet load.

Example: If the stretch tension knob is set at 2 on dial the film will be applied very loose onto the pallet. If the dial is set at Maximum 10 on the dial, the film may break or it will possibly crush the corner of corrugated boxes. The amount of stretch always stays the same at 150%

\* The normal operating range is from 4 to 8

You will need to find a happy medium for your particular application based on your load weight, type of load, strength of corrugated used etc.

SPW-982 Pallet Wrapper Manual

---

---

**Machine Pause**



Pause Key – Allows you to pause the film carriage to reinforce a certain area of your pallet. Key must be pressed to work. Once released film carriage will travel again.

**Getting Started**



Turn power switch to "on" position



Place pallet load onto turntable and try to center pallet load evenly on turntable base.



Pull several feet of film and attach to turntable base as shown.

## SPW-982 Pallet Wrapper Manual



Press the **start** button. The machine will automatically wrap the pallet load. Remember the machine will wrap depending on which program memory you have pre-set it for.

Once the cycle is complete, tear the stretch film and press excess film against pallet load to attach.

Remove pallet load via fork lift or pallet jack (if you have ramp).

Remember you may  the cycle at any time by pressing and holding down the  button to reinforce a specific area of your pallet load for added strength.

---

---

**Trouble Shooting-Machine Will Not Start**



1. A. Check to make sure machine is plugged into 110 volt service.
- B. Check for voltage present on incoming line.
- C. Check power cord end plug for loose connection.



1. Make sure the power switch is turned to "on" position.
2. Make sure the emergency stop switch is not engaged. Twist turn to disengage.

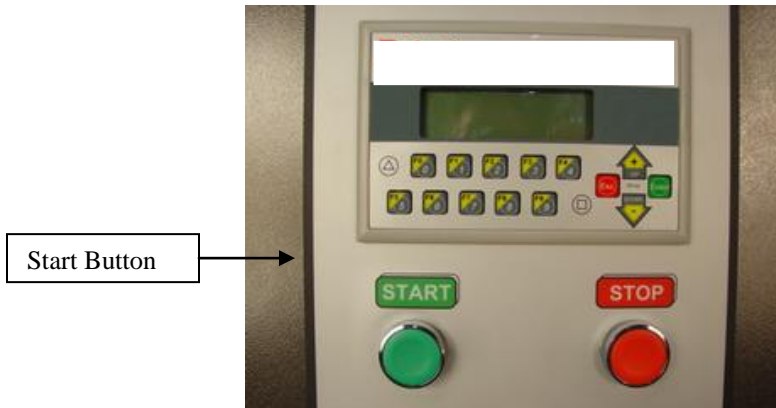


SPW-982 Pallet Wrapper Manual

---



Make sure you have machine in "auto" mode-when in "MANUAL" mode machine must be operated manually.



You must press the Start button to activate machine cycle.



Make sure power light is on and display is on.

---

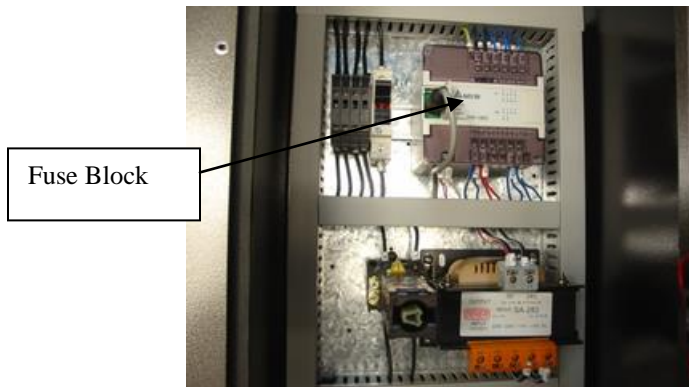


**SPW-982 Pallet Wrapper Manual**

---



Use key provided with machine to unlock front control panel to open.



Open fuses in fuse block – check for continuity. Replace if bad.

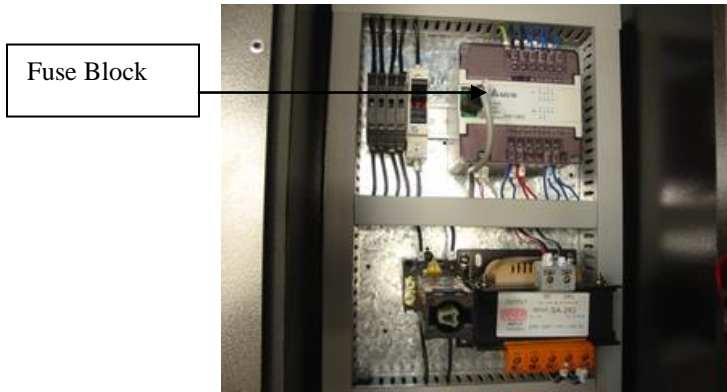
**Machine in Emergency Stop Mode**



Turn emergency switch on front control panel **“Counter Clock Wise”** to disengage.

---

**Turntable will not turn**



Check fuse- Replace if required.

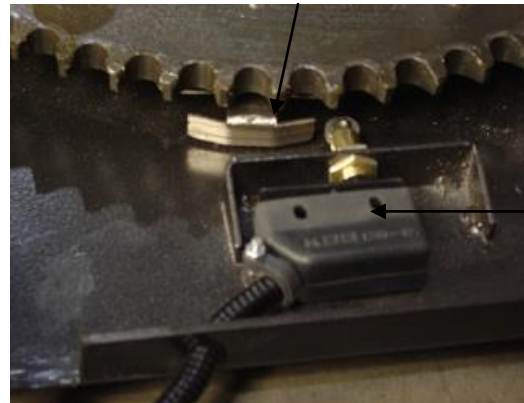


Remove Back Panel- Check connections to motor. Test motor and please if necessary.

**Film Carriage Will Not Rise**



Remove the 7 bolts holding turntable top plate and slide off-**lifting not required.**



Check micro switch to see if it has come loose- switch must touch plate on sprocket on each revolution. If switch is not hitting plate it will not count revolutions required to start film carriage movement.

---

---

**Film Carriage Will Not Rise**



Remove top cover on tower mast



Check motor-replace if required

---

---

**Maintenance**

1. No special preventative maintenance operations are required, but it is a good habit to check regularly the condition of the main machine parts, carriage belt, turntable drive chain, etc.
  2. Always replace worn out parts with original spare parts to prevent inefficiency and potential damage to machine.
  3. All maintenance operations should be carried out by personnel in charge of mechanical maintenance.
- 
-

**Check Drive Chain Tension**



Remove the 6 bolts holding cover on base



Adjustable  
Sprocket

Check chain tension- sprocket's mounted in slotted channel which can be moved to increase chain tension.



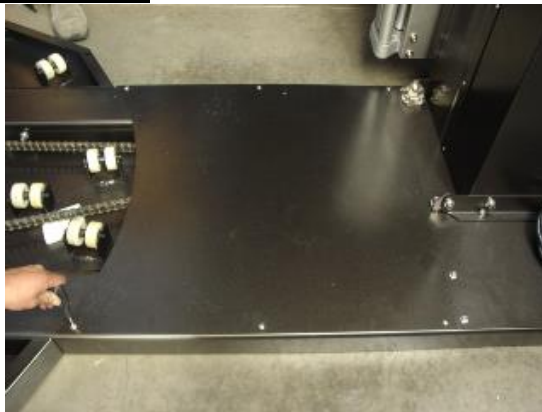
Remove back panel





Motor mounts are slotted and allow greater adjustment of chain tension.

### **Lubrication of Chain**



Remove top panel to expose chain

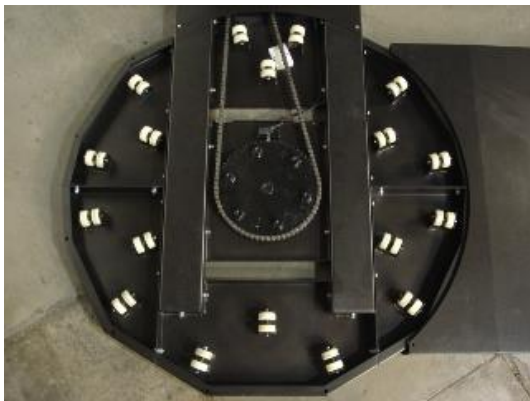


Use heavy weight chain lube or grease-use liberally.

## Replacement of Load Bearing Rollers



Remove 7 bolts holding turntable top plate.

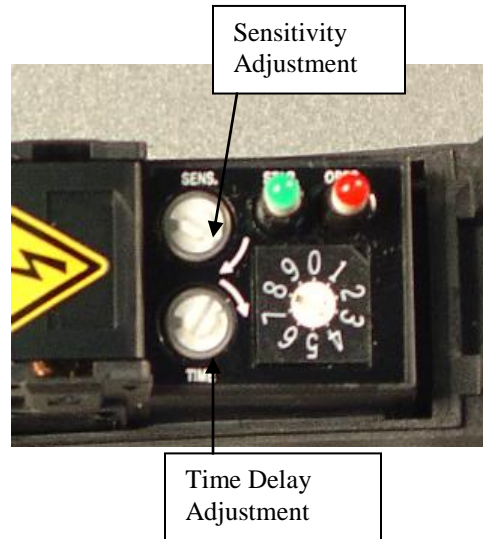
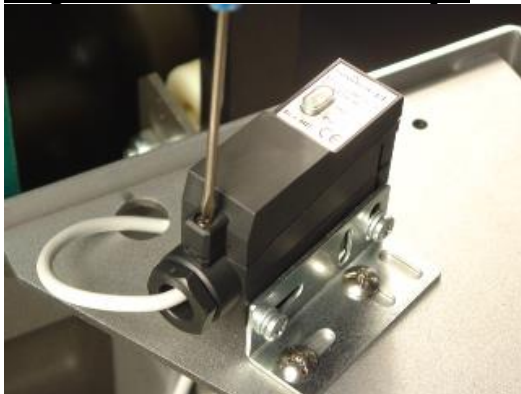


Dual rollers can be easily removed and replaced. Simply lift out and replace with new set.

---



### Adjustment of Photo Eye



Remove top cover

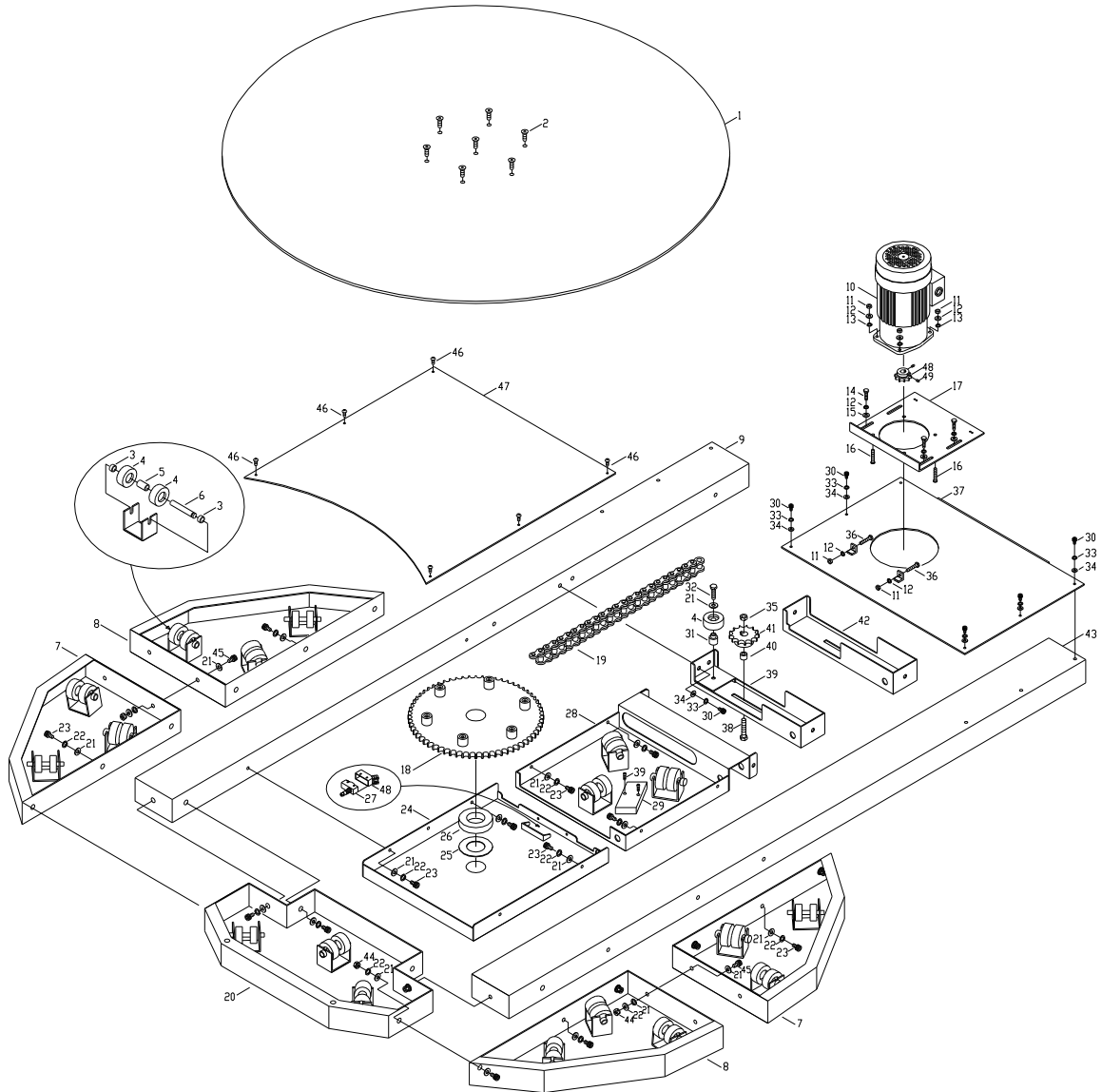


Adjusts time delay allows you to set how much extra film over top of pallet.



Adjustment of photo eye sensitivity.

# SPW-982 Pallet Wrapper Manual



**SPW-982 Pallet Wrapper Manual**

Pos	Part #	Qty	Description
1	B20001	1	Turntable
2	S04-1025	6	Flat socket head screw, M10x25
3	B10042	36	Collar, short
4	B10043	36	Support roller
5	B10044	18	Collar, long
6	B10041	18	Shaft
7	B20002	2	Turntable base A
8	B20003	2	Turntable base B
9	B20004	1	Support tube LH
10	E63200	1	Turntable motor, 220V/ 50~60Hz, 3Ph.
	E63201		Turntable motor, 240V/ 50Hz, 3Ph.
11	S12-0806	6	Hexagon nut, M8
12	S16-0800	10	Spring washer, M8
13	S15-0801	4	Plain washer, M8 (small)
14	S01-0820	4	Hexagon bolt, M8x20
15	S15-0802	4	Plain washer, M8
16	S04-0825	4	Flat socket head screw, M8x25
17	B20005	1	Motor seat
18	B20006	1	Turntable sprocket
19	B20007	1	Chain
20	B20008	1	Turntable base C
21	S15-1002	33	Plain washer, M10
22	S16-1000	33	Spring washer, M10
23	S02-1016	27	Hex socket bolt, M10x16
24	B20009	1	Turntable base D
25	B10039	1	Washer
26	S50-6211	1	Ball bearing 6211zz
27	E28500	1	Limit switch
28	B20010	1	Turntable base E
29	B20011	1	Plastic board
30	S02-0612	8	Hex socket bolt, M6x12
31	B20012	1	Roller seat
32	S01-1040	1	Hexagon bolt, M10x40
33	S16-0600	8	Spring washer, M6
34	S15-0602	8	Plain washer, M6

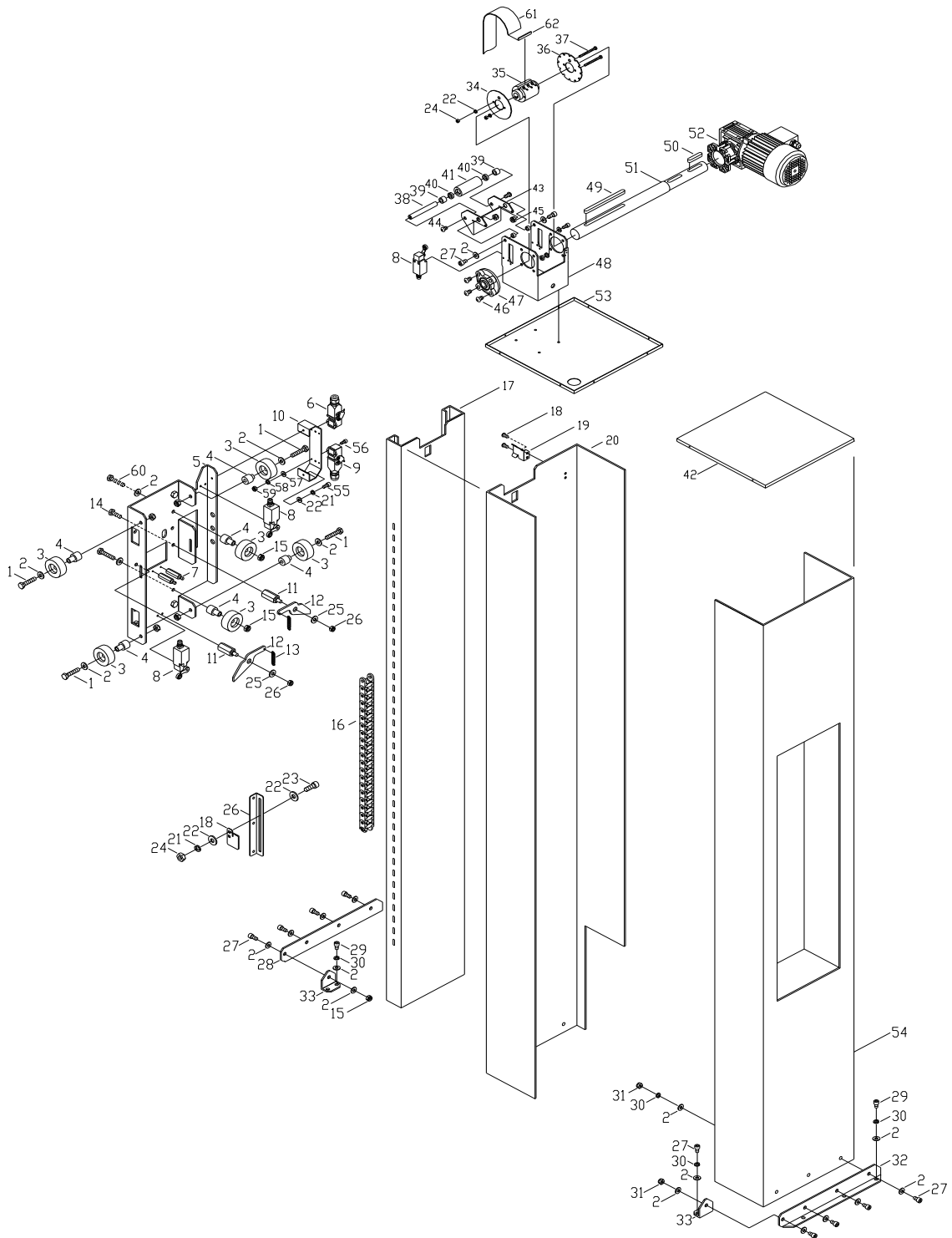
## SPW-982 Pallet Wrapper Manual

---

---

Pos.	Part #	Qty	Description
35	S12-1206	1	Hexagon nut, M12
36	S01-0840	2	Hexagon bolt, M8x40
37	B20013	1	Turntable base F
38	S01-1250	1	Hexagon bolt, M12x50
39	B20014	1	Turntable base G
40	B20015	1	Spacer
41	B20016	1	Tension sprocket
42	B20017	1	Turntable base H
43	B20018	1	Support tube RH
44	S12-1005	6	Hexagon nut, M10
45	S02-1025	6	Hex socket bolt, M10x25
46	S08-0612	6	Truss head machine screw, M6x12
47	B20019	1	Turntable base I
48	E28300	1	Limit switch protection cover
49	B20020	1	Motor sprocket
50	S09-0810	2	Hex socket set screw, M8x10
	B20021	1	Load ramp (Option)

# SPW-982 Pallet Wrapper Manual



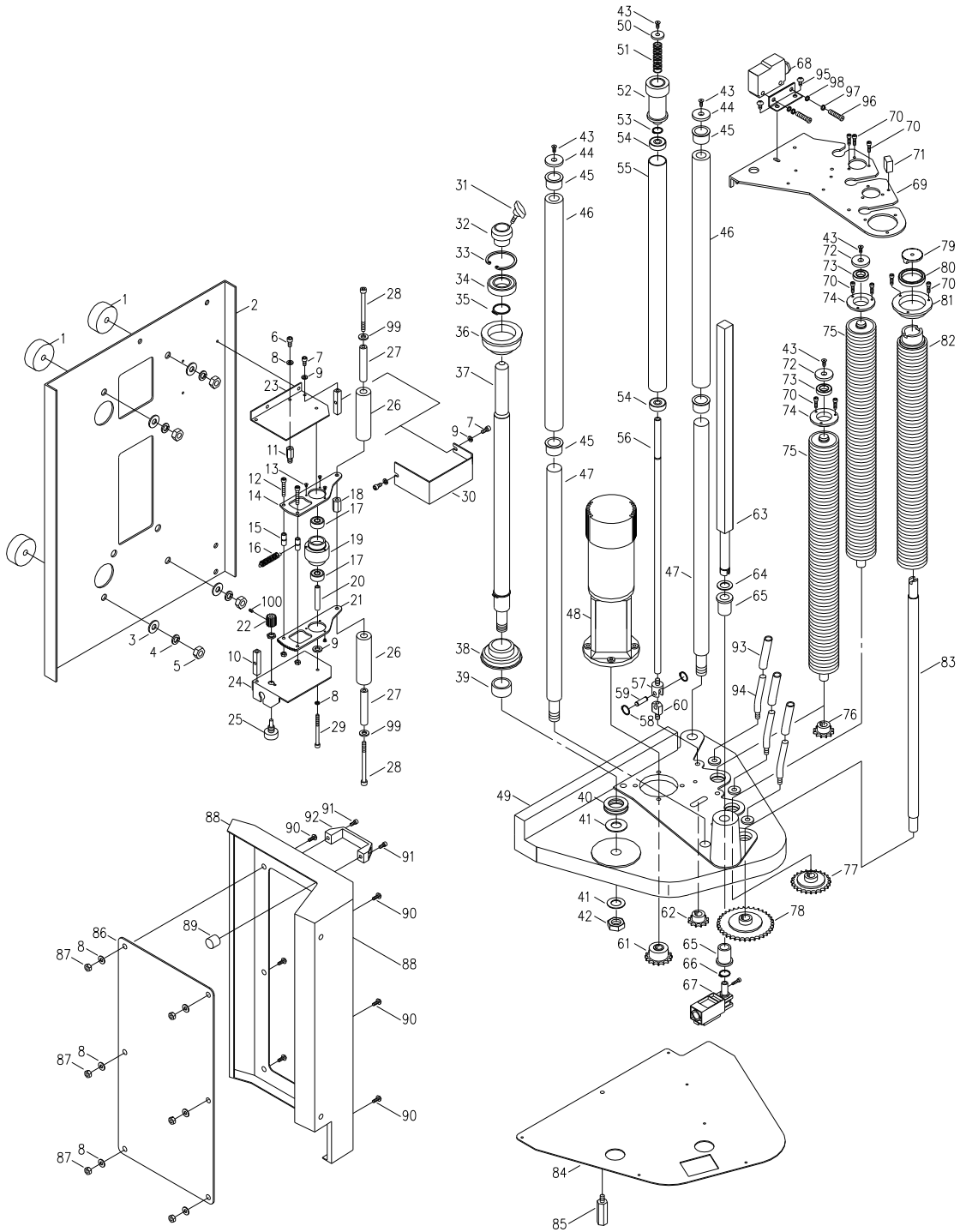
## SPW-982 Pallet Wrapper Manual

Pos.	Part #	Qty	Description
1	S01-1050	8	Hexagon bolt, M10x50
2	S15-1002	8	Plain washer, M10
3	B10043	8	Support roller
4	B20012	8	Roller seat
5	B20023	1	Carriage plate
6	E82300	1	4P Quick connector
7	B20024	2	Spring hook
8	E29000	3	Limit switch
9	E82400	1	9P Quick connector
10	B20025	1	Quick connector plate
11	B20026	2	Safety clip seat
12	B20027	2	Safety clip
13	B20028	2	Spring
14	S01-1020	2	Hexagon bolt, M10x20
15	S12-1008	10	Hexagon nut, M10
16	B20029	1	Cable channel
17	B20030	1	Carriage guide plate
18	S08-0510	5	Truss head machine screw, M5x10
19	B20031	1	Upper limit switch trigger plate
20	B20032	1	LH tower
21	S16-0600	2	Spring washer, M6
22	S15-0602	4	Plain washer, M6
23	S02-0616	2	Hex socket bolt, M6x16
24	S12-0605	2	Hexagon nut, M6
25	S15-0802	2	Plain washer, M8
26	S12-0806	2	Hexagon nut, M8
27	S02-1025	8	Hex socket bolt, M10x25
28	B20033	1	LH tower mounting bracket
29	S02-1016	4	Hex socket bolt, M10x16
30	S16-1000	12	Spring washer, M10
31	S12-1006	8	Hexagon nut, M10
32	B20034	1	RH tower mounting bracket
33	B20035	2	Tower hinge angle plate
34	B20036	1	Carriage belt wheel LH plate
35	B20037	1	Carriage belt wheel
36	B20038	1	Carriage belt wheel RH plate
37	S01-0670	2	Hexagon bolt, M6x70

**SPW-982 Pallet Wrapper Manual**

<b>Pos.</b>	<b>Part #</b>	<b>Qty</b>	<b>Description</b>
38	B20039	1	Shaft
39	B20040	2	Spacer
40	S50-6902	2	Ball bearing 6902zz
41	B20041	1	Active roller
42	B20042	1	Top cover plate
43	B20043	1	Active roller bracket
44	S08-1016	2	Truss head machine screw, M10x16
45	B20044	2	Spacer
46	S08-1030	2	Truss head machine screw, M10x30
47	S50-FC204	1	Ball bearing FC204
48	B20045	1	Motor bracket
49	S21-060690	1	Round end key, 6x6x90
50	S21-060650	1	Round end key, 6x6x50
51	B20046	1	Motor shaft
52	E63300	1	Carriage gear motor, 220V/ 50-60Hz, 3 Ph.
	E63301		Carriage gear motor, 240V/ 50Hz, 3 Ph.
53	B20047	1	Carriage motor group mounting plate
54	B20048	1	RH tower
55	S02-0612	2	Hex socket bolt, M6x12
56	S08-0314	4	Truss head machine screw, M3x14
57	S15-0301	4	Plain washer, M3
58	S16-0300	4	Spring washer, M3
59	S12-0303	4	Hexagon nut, M3
60	S01-1040	4	Hexagon bolt, M10x40
61	B20049	1	Carriage belt
62	B20050	1	Carriage belt stopper

# SPW-982 Pallet Wrapper Manual





**SPW-982 Pallet Wrapper Manual**

<b>Pos.</b>	<b>Part #</b>	<b>Qty</b>	<b>Description</b>
1	B20056	4	Washer
2	B20057	1	Side plate
3	S15-1002	4	Plain washer, M10
4	S16-1000	4	Spring washer, M10
5	S12-1006	4	Hexagon nut, M10
6	S02-0612	1	Hex socket bolt, M6x12
7	S02-0512	7	Hex socket bolt, M5x12
8	S15-0601	1	Plain washer, M6
9	S15-0501	7	Plain washer, M5
10	B20058	2	Square pillar
11	B20059	1	Spring hook
12	S02-0530	2	Hex socket bolt, M5x30
13	S04-0308	6	Flat socket head screw, M3x8
14	B20060	1	Trigger plate
15	B20061	2	Trigger plate pillar
16	B20062	1	Spring
17	S50-0608	2	Ball bearing, 608zz
18	B20063	1	Spacer
19	B20064	1	Bearing housing
20	B20065	1	Spacer tube
21	B20066	1	Trigger rack plate
22	B20067	1	Pinion
23	B20068	1	Trigger device upper plate
24	B20069	1	Trigger device lower plate
25	E46100	1	Potentiometer Film Carriage B103
26	B20070	2	Trigger roller
27	B20071	2	Trigger roller shaft
28	S02-0680	2	Hex socket bolt, M6x80
29	S02-0560	1	Hex socket bolt, M5x60
30	B20072	1	Trigger device side cover
31	B20073	1	Lock knob
32	B20074	1	Lock ring
33	S23-5500	1	Internal circlip, S55
34	S50-6006	1	Ball bearing, 6006zz
35	S24-2500	1	External circlip, R25

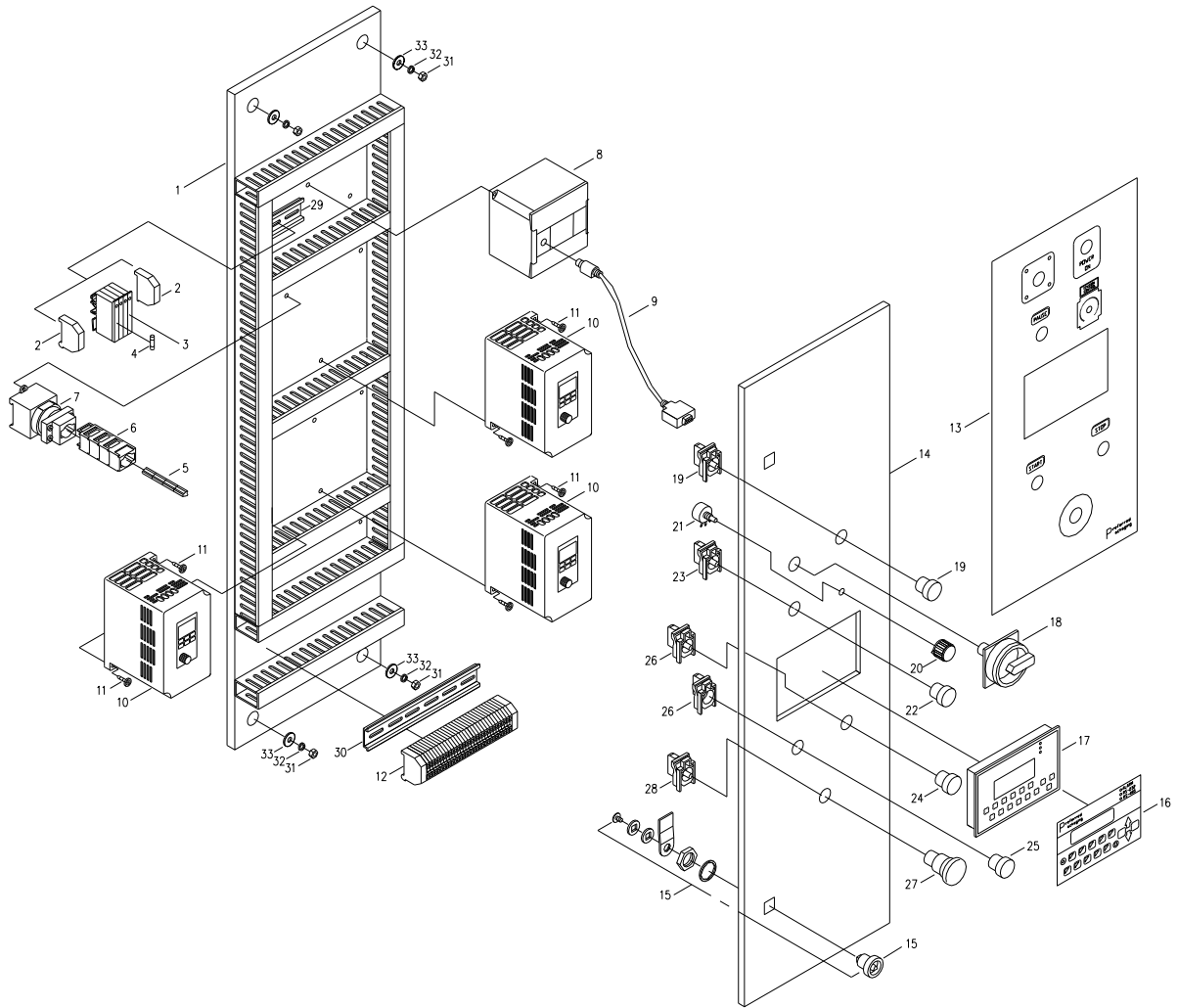
**SPW-982 Pallet Wrapper Manual**

<b>Pos.</b>	<b>Part #</b>	<b>Qty</b>	<b>Description</b>
36	B20075	1	Upper film holder
37	B20076	1	Film shaft
38	B20077	1	Bottom film holder
39	B20078	1	Copper bush
40	S50-1106	1	Surface bearing, 1106
41	S15-2002	2	Plain washer, M20
42	S12-2010	1	Hexagon nut, M20
43	S04-0616	5	Flat socket head screw, M6x16
44	B20079	2	Washer
45	B20080	4	Plastic bearing
46	B20081	2	Roller
47	B20082	2	Roller shaft
48	E63400	1	DC gear motor
49	B20083	1	Casting base
50	B20084	3	Washer
51	B20085	3	Spring
52	B20086	3	Handle
53	S24-1200	3	External circlip, R12
54	S50-6201	6	Ball bearing, 6201zz
55	B20087	3	Roller
56	B20088	3	Roller shaft
57	B20089	3	Upper jointer
58	S24-0800	6	External circlip, R8
59	B20090	3	shaft
60	B20091	3	Bottom jointer
61	B20092	1	Motor sprocket
62	B20093	1	Tension sprocket
63	B20094	1	Door shaft
64	S15-1802	1	Plain washer, M18
65	B20095	1	Copper bush
66	S24-1800	3	External circlip, R18
67	E86100	1	Door safety switch
68	E84100	1	Photo-cell
69	B20096	1	Upper roller mounting plate
70	S02-0510	9	Hex socket bolt, M5x10
71	B20097	1	Magnet
72	B20098	2	Washer

**SPW-982 Pallet Wrapper Manual**

<b>Pos.</b>	<b>Part #</b>	<b>Qty</b>	<b>Description</b>
73	S50-6903	1	Ball bearing, 6903zz
74	B20099	2	Bearing housing
75	B20100	2	Rubber roller
76	B20101	1	3rd Rubber roller sprocket
77	B20102	1	2nd Rubber roller sprocket
78	B20103	1	1st Rubber roller sprocket
79	B20104	1	Washer
80	S50-6808	2	Ball bearing, 6808zz
81	B20105	1	Bearing housing
82	B20106	1	1st Rubber roller
83	B20107	1	1st Rubber roller shaft
84	B20108	1	Bottom plate
85	B20109	1	Hexagon rod
86	B20110	1	Plastic sheet
87	S12-0605	6	Hexagon nut, M6
88	B20111	1	Safety door
89	B20112	1	Magnet
90	S08-0608	6	Truss head machine screw, M6x8
91	S02-0612	2	Hex socket bolt, M6x12
92	B20113	1	Handle
93	B20114	3	Rubber buffer
94	B20115	3	Stopper rod
95	S08-0612	2	Truss head machine screw, M6x12
96	S08-0630	2	Truss head machine screw, M6x30
97	S16-0600	2	Spring washer, M6
98	S15-0601	2	Plain washer, M6
99	S15-0602	2	Plain washer, M6
100	S09-0405	1	Hex socket set screw, M4x5

# SPW-982 Pallet Wrapper Manual



**SPW-982 Pallet Wrapper Manual**

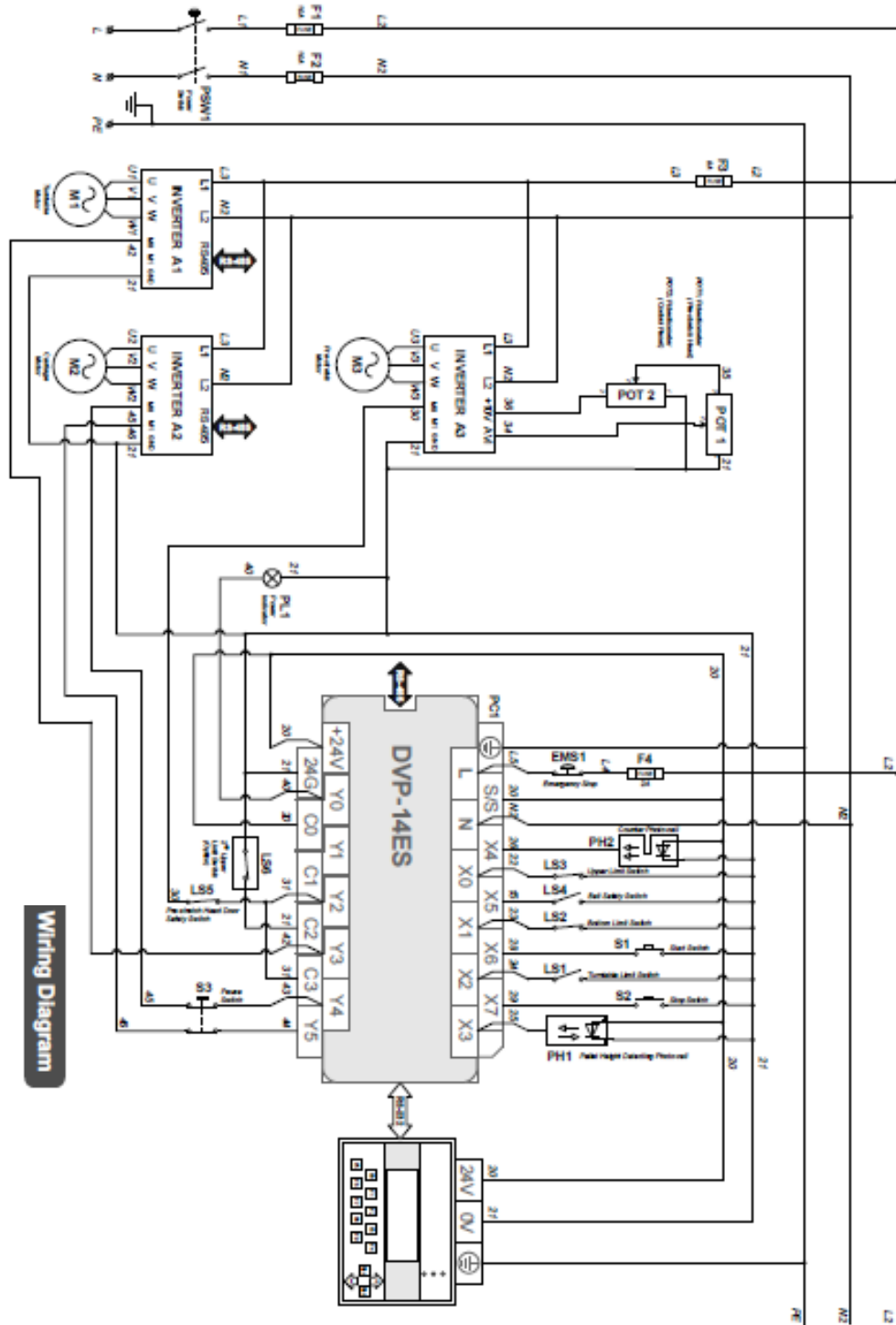
<b>Pos.</b>	<b>Part #</b>	<b>Qty</b>	<b>Description</b>
1	B20121	1	Control panel base
2	E30900	2	Terminal stopper
3	E32600	4	Fuse box
4	E36612	2	Fuse, 12A
	E36608	1	Fuse, 8A
	E36602	1	Fuse, 2A
5	E24503	1	Power switch – extension shaft
6	E24502	1	Power switch – extension block
7	E24500	1	Power switch – switch unit
8	E90200	1	PLC DVP-16ES
9	E90202	1	DVP-16ES RS-232 cable
10	E67300	3	Inverter Delta S1
11	S10-0508	10	Pan head tapping screw, M5x8
12	E30800	30	Terminal block
13	B20126	1	Control panel sticker – PP983PA
14	B20122	1	Control panel front door
15	E88100	2	Door lock
16	E90001	1	PLC console sticker
17	E90002	1	PLC console TP-02
18	E24501	1	Power switch – knob unit
19	E26500	1	Pilot lamp
20	E47300	1	Knob
21	E45300	1	Potentiometer Tension Control B302
22	E23200	1	Pause switch – knob button
23	E23201	1	Pause switch – switch unit
24	E23202	1	Stop switch – knob button
25	E23203	1	Start switch – knob button
26	E23204	2	Stop/ Start switch – switch unit
27	E23205	1	Emergency switch – knob button
28	E23206	1	Emergency stop switch – switch unit
29	B20123	1	Mounting plate - short
30	B20124	1	Mounting plate - long
31	S12-0605	4	Hexagon nut, M6
32	S16-0600	4	Spring washer, M6
33	S15-0602	4	Plain washer, M6

**SPW-982 Pallet Wrapper Manual**

**Spare Parts List**

<b>Item #</b>	<b>Part #</b>	<b>Description</b>	<b>Qty.</b>	
1	E29000	Limit switch	1	
2		Chain lube	1	
3	E28500	Micro switch turntable	1	
4	B10043	Turntable support rollers	2	
5	E39300	Fuse 12A	2	
6	E39100	Fuse 8A	2	
7	E38800	Fuse 5A	2	
8	E38500	Fuse 2A	2	
<b>Total Cost</b>				

### SPW-982 Pallet Wrapper Manual



**SPW-982 Pallet Wrapper Manual**

---